

2016 Product and Specification Guide Modular Cabinetry and Case Work

A Better Healing Environment



Table of Contents

1. Table of Contents	Page 2
2. Introduction to Essentials	Page 3-4
3. Features and Benefits	Page 5-6
4. Typical Exam Room Set-Ups	Page 7
5. LEED Credits Environmentals	Page 8
6. Warranty	Page 9
7. Terms and Conditions	Page 10
8. Materials and Finishes	Page 11
10. Wall Cabinets	Page 12
11. Glove Box Cut Outs	Page 12
12. Sanitary Slope Tops for Wall Cabinets	Page 12
13. Base Cabinets/Drawer Base Cabinets	Page 13-14
14. Sink Cabinets	Page 15
15. ADA Sink Cabinets	Page 15-16
16. Cut-Outs and Faucet Options	Page 16
17. Wall Mount Lap Top Station	Page 16
18. Center Drawers for Desk Return	Page 17
19. Lap Top Computer Trays	Page 17
20. Desk Returns	Page 17
21. Solid Surface/HPL/Bacteriiriacidal Work Surfaces	Page 18-21
22. Work Surface Finishes	Page 22-23
23. Solid Surface Integrated Sink	Page 23
24. Lock Options	Page 23

Installation Instructions Available From Intensa

Evolving healthcare requires medical interiors to be flexible keeping pace with providers needs along with medical and diagnostic advancements. Healthcare facilities should enable these ongoing advances along with providing the patient with an environment that promotes positive healing outcomes. Essentials modular cabinetry is the ideal design to support today's healthcare interiors.

Modular Cabinetry and Case Work





Essentials

A Better Healing Environment

Reconfigurable Modularity

HAI Awareness

Environmental

Architectural Vision

Adaptation

Sustainable Value

Features and Benefits

Reconfigurable Modularity

Essentials is a modular system of interchangeable components for today's health care facilities. Configurations for patient rooms, exam rooms, caregiver work areas, and other clinical spaces are easily assembled, removed, rearranged and refreshed while damaged product can be easily replaced without demolition or incineration which can be extremely costly to the medical practice.

HAI Awareness

Along with being aesthetically gratifying, Essentials was designed to be easily cleaned, offering finishes that are durable and will hold up to today's stringent cleaner. All Essentials finishes are applicable to today's health care facilities stringent housekeeping requirements. Most importantly, cabinetry clearance off the floor provides accessible cleaning without damage to the cabinetry.

Environmental

Essentials supports practical, economical and sustainable manufacturing aligning itself with suppliers who share our vision and commitment to a "green" stewardship toward our environment. Our Leed endorsements promote the reduction of air pollutants, waste, and materials needed, while improving air quality and occupant wellness.

Architectural Visions

Essentials allows today's architects, designers and facility planners to create healing and wellness zones offering an extensive selection of design options. These options promote all aspects of wellness to the patient and families while maximizing all available efficiencies to health care providers.

Adaptation

Rapidly changing health care facilities emerging as leaders today face challenges of obsolescence tomorrow. Essentials continuously evolving designs and modularity help today's health care providers keep pace with today's patient needs and requirements. Minimize your facilities adaptation expenses using Essentials.

Sustainable Value

Essentials flexible solutions allows for cost reductions through installation ease, design updates, re-configuration of existing product and replacement of damaged components. In addition, our re-configurable modularity helps reduce disposal and incineration cost of existing fixed or built-in cabinetry. Essentials depreciates in 7 years as compared to 39 years for a fixed or built-in product.

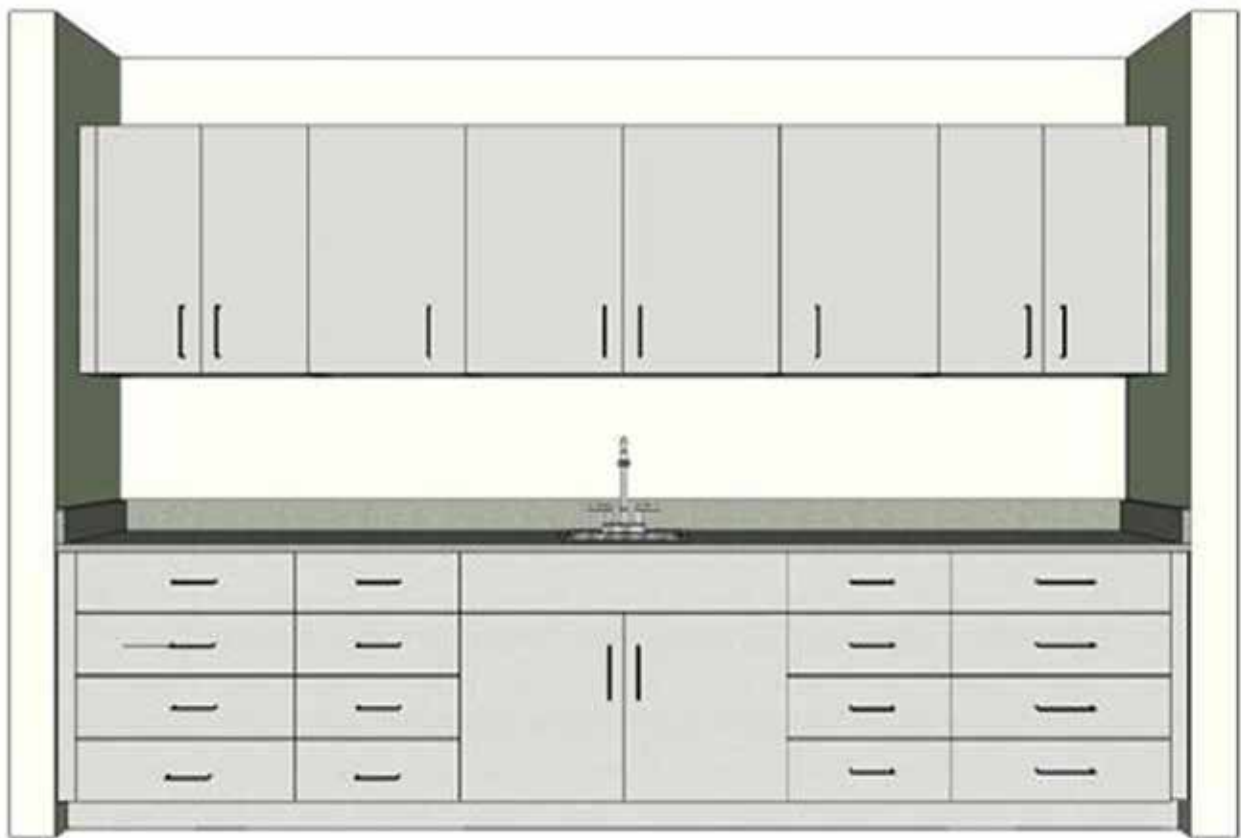
A Better Healing Environment



Features and Benefits

- Intensa, Inc. reconfigurable modular caseworks can be depreciated in 7 years vs. the 39 year depreciation of built in cabinets. Consult tax advisor on specific applications.
- Intensa, Inc. has a 5 year Limited Warranty. See full details of the Limited Warranty. Most competitors or built-in products do not carry a full 5 year warranty.
- Intensa, Inc. caseworks can be reconfigured and moved at any future time to better accommodate the work that is being accomplished. Built in cabinets cannot be moved or cannot be moved as quickly and easily.
- Intensa, Inc. uses cam lock, steel on steel construction and all units are shipped fully assembled which means true and accurate alignment of cabinets is assured. They are not shipped in pieces and parts that may mean that parts do not align properly and additional cost to the installers.
- Standard Work Surfaces is Solid Surface (SS) with integrated back splash.
- All cabinets are finished on the inside and the outside. The inside of cabinets looks the same as the outside and gives a finished look as well as prevents any absorption by the substrate. All cabinets are designed with white backs for enhanced vision.
- All cabinets, both base and wall units, are finished on all four sides for sanitary control.
- All door and drawer edges are wrapped in durable and seamless RTF. Back edges of the base and wall cabinets are finished to avoid absorption of water or other matter.
- Intensa, Inc. uses decorative thermally fused laminate on case sides, backs and supporting panels which meets the testing requirements of BIFMA/ANSI laminate requirements.
- Wall hanging hardware is easily adjustable in the field for proper working of the cabinets and is hidden from view after adjustment by protective cover.
- Hinges are Blume 110 degree hinges are easily adjustable in the field with a simple Phillips screwdriver for proper alignment at the time of initial installation and later on if units are changed in position.
- Intensa, Inc. can provide drawings 2D & 3D plus a quotation at no charge. Customer will need to submit cad or dimensional drawings.
- Casework is also Urea Formaldehyde free, meeting more stringent specifications than ANSI A208.1-199 and ANSI A208.2-2002 standards.
- Can contribute to LEED points for materials and resources 4.1, 4.2, 5.1, and 5.2 due to our use of 100% recycled wood fiber. We can also contribute to LEED points for materials and resources.

Typical Exam Room Set-Ups



Environmental Commitments and LEED Credits

<u>LEED Category</u>	<u>Objective</u>	<u>Requirements</u>	<u>Potential Point</u>	<u>Intensa Compliance</u>
Indoor Environmental	Improve air quality and occupant wellness.	Product with no added Urea Formaldehyde (UF)		Panels with zero added UF Powder Paint with zero VOC Polystyrene with zero PVC Germ & allergy killing surface
Quality (IEQ)	Eliminate and reduce indoor pollutants or harmful	Hazardous Air Pollutants (HAP) Volatile Organic Compounds (VOC) Low emitting materials Pollutant Control	1-5 1	
Material and Resource (MR)	Reduce environmental impact, waste, and material's needed Source locally	MR 4.1-10% recycle content MR 4.2-20% recycle content MR 5.2-source within 500 miles.	1 1 1	100% recycled cores High cycle content for plastics and steel. Natural surfacing material Local southeast US manufacturing "Green" Facility
Innovation and Design (CI)	Environmentally practical strategies and behaviors.	Improved sustainable building strategies and knowledge.	1-4	Eliminate millwork obsolescence, replacement Impacts and cost. Modular Design for easy reuse and maximum service to life.
Innovation in Upgrades, Operations and Maintenance	Expand LEED and sustainable building practices & knowledge.	Exceed required LEED performance levels and innovate.	1-4	Self-sanitizing, low maintenance surfaces. Reconfigure to upgrade with minimal cost and zero environmental impact.

Case Work Limited Warrantanty

Intensa warrants its products, to the original owner, to the extent of the purchase price, to be free from defects in material and workmanship for a period of 5 years from the date of the original shipment, if the products are properly installed, maintained, serviced and used under normal conditions. Products are not warranted against the effects of normal wear and tear, misuse, negligence, or accident. Warranty is void with respect to any product which has been modified after initial installation. Standard products are not warranted against damage caused by exposure to heat or moisture. Products are not warranted against problems or damage caused by the failure of walls to support the weight imposed by the attachment of cabinets. Products are not warranted against the effects of overloading cabinets and/or shelves.

The obligation under this warranty of Intensa, Inc. is limited to repairing without charge, or replacing, all products which Intensa is satisfied were defective when originally shipped. Claims under this warranty are to be reported in writing with supporting digital photograph as soon as the problem is known. Claims for shortages or damage present on delivery shall be made within 15 days of delivery. Claims for shipping damage are not covered by this warranty, and shall be presented to the carrier as soon as possible after delivery.

Intensa, Inc. cannot file a freight claim on behalf of its customers.

This warranty is exclusive and in lieu of all other warranties and remedies whatsoever, including but not limited to implied warranties. Intensa, Inc. shall have no liability whatsoever for damages caused by transportation, accidents, fire, unauthorized alteration, or abnormal wear or abuse, nor shall Intensa, Inc. have any liability whatsoever for any incidental or consequential damages. This includes without limitation, lost profits or as such damages arising from the design, manufacture sale, delivery, installation, repair, operation or use of any products of Intensa, Inc. or any actual/alleged failure or defect in products of Intensa, Inc.

*****Casework Warning*****

Intensa does not provide fasteners for wall hanging applications. Installers are responsible for furnishing and installing sufficient numbers of the correct fasteners for the field conditions encountered. Installer should always attach wall hanger devices into a structural member, or into a heavy duty toggle mechanism, as appropriate for the wall construction and the anticipated load requirements.

Installers are responsible for furnishing and installing adequate fasteners for field conditions encountered.

Terms and Conditions

Payment Terms: Regular terms are Net 30 days (date of invoice). All invoices are dated the day of shipment. A late payment charge of 1 1/2 % per month, 18% per annum, on past due accounts or the highest amount permitted by law will be assessed. To open an account the names and addresses of five trades references, your company bank and resale number will be required. If an account has not been established, orders will be handled on a Proforma, COD or credit card basis. Intensa, Inc. accepts MasterCard, Visa, AMX and Discover for payment.

Intensa will additionally add a 2% fee for any payments made after the 10th billing day of invoice for credit card payments.

Intensa, Inc. reserves the right to assign invoices to a factoring company.

Freight Policy: All freight charges are prepaid and allowed unless noted. Prices are determined by zone location to which is shipped. All shipments are F.O.B. High Point, NC, unless specified. (Title of goods transfers to purchaser when shipment leaves our dock). All orders will be shipped via best carrier available at time of shipment. Upgrade shipments are available, contact customer service for additional shipping charges.

Additional Delivery Charges:

Residential Delivery Charges-	Amount billed by carrier.
Address Correction-	Amount billed by carrier.
Definite Delivery Charges for Freight-	Amount billed by carrier.
Secured Area Delivers-	Amount billed by carrier.

Freight Claims: All shipments should be carefully inspected for damage upon receipt. Any carton damage should be noted on the freight bill or delivery receipt. **Concealed damage requires immediate inspection by carrier within 15 days from receipt of goods. Intensa, Inc. cannot file a freight claim on behalf of its customers.**

Returning Merchandise: Arrangements must be made in writing prior to the return of any merchandise. Please call customer service at (336)-884-4096 for further information. Unauthorized returns will not be accepted and Intensa, Inc. will not be responsible for any resulting charges incurred. **Only new product in the original carton may be returned per the following restocking charges. Replacement Exam Bed Tops are custom made and not returnable for credit.**

Return Policy

Return with reorder.
Merchandise less than six months.
Merchandise greater than six months, less than one year.
Goods greater than one year.
Merchandised returned that is unsuitable for resale.

Credit

75% Plus shipping charges.
65% Plus shipping charges.
50% Plus shipping charges.
No credit allowed.
No credit allowed.

Intensa, Inc. error in processing can be returned at no charge.

Ordering Information: All orders for product must be submitted on a purchase order via fax or email. No verbal orders will be taken unless order is prepaid. Payment can be made with company check or credit card (MasterCard, Visa, AMX and Discover). Contact customer service for more details concerning prepaids. The following information is required on all purchase orders.

Quantity of each model, Model Number, Upholstery Pattern/Color/Laminate and Selection of Options

Caseworks Cancellation-Orders cancelled prior to the start of production are subject to expenses incurred in processing order. No cancellations will be accepted after the start of production.

Responsibility for Installation-Installation is the responsibility of the purchaser and/or the installer selected by the purchaser. Intensa is not responsible or liable for damage or injury caused by improper installation, including but not limited to the failure of installers to provide adequate fasteners and other support for the load imposed by the weight of cabinets and their contents. Intensa, Inc. is dedicated to providing you and your customer with high quality products. In doing so, we reserve the right to improve, discontinue or modify designs with new materials and or manufacturing techniques without prior written notice.

Intensa, Inc.

Standard Materials and Finishes for Case Work

Thermally Fused Laminate Finish (TFL) and Rigid Thermafoil Finishes (RTF) for Cabinet Finishes

<u>Solids</u>	<u>Wood Grains</u>		
White	Tenino Oak	Clark Cherry	Wild Cherry
Almond	Maple	Drake	Mahogany
Folkstone Gray	Nina Maple	Brazilian Walnut	Tenino Gray
Black	Pinta Maple		

Top Surface Finishes

Wilson Art Standard In-Stock Finishes

Designer White	Carbon EV	Tawny Legacy	Woolamai Brush
Titanium EV	Neutral Grace	Chai Tea	Venetian Ale
Crisp Linen	Tumbleweed Mosaic	Kiwi	Black
Olive Legacy	Khaki Brown	Aqua Fiz	

3MM ABS Edge Finishes to Match Wilson Art Finishes

White	Carbon EV	Almond	Black
Titanium EV	Stone	Olive Legacy	Kiwi
Gray	Khaki Brown	Aqua Fizz	Beige

Bacteriacidal Top Surfaces

Edelweiss	Sahara	Green	Slate Gray
Fresco Blue	Serene Gray	Sand	Stucco Russo
Laguna	Hyacinth		

LG HiMac's Solid Surface Finishes-Level 1

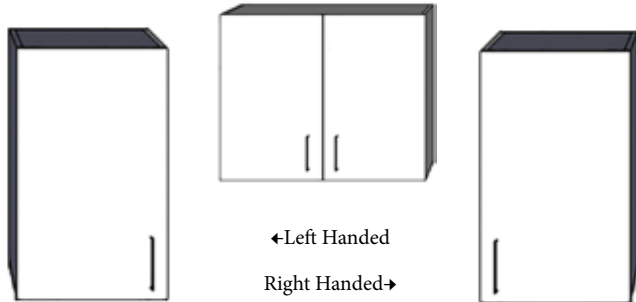
Nordic White	Opal White	Artic White
Alpine White	Ivory White	

Solid Surface Sink-White

Level 2 and 3 Solid Surface Colors Available at an Up-Charge.

LG HI-MACS[®]
Acrylic Solid Surface

Wall Cabinets



Wall Case made with TFL (Thermally Fused Laminate)

Doors made with TFL (Thermally Fused Laminate)

3MM Edge Standard on Doors, Drawers and Work Surfaces

One Adjustable Shelf

Blum Hinges

Standard Pulls-Brushed "D" Style Handle

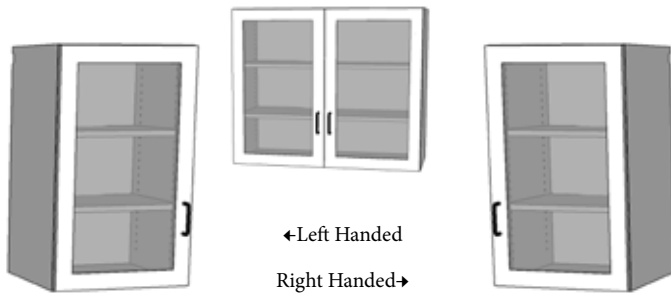
Single Lock or Double Lock Available

<u>Item</u>	<u>List</u>	<u>Width</u>	<u>Depth</u>	<u>Height</u>	<u>Cabinet Weight</u>
1814-SDWC	464.00	18	14	30	30 lbs.
3614-DDWC	615.00	36	14	30	60 lbs.

Please Specify Left or Right by Denoting "L" or "R" at the end of the item number

Additional Sizes Available

Wall Cabinets with Tempered Glass



Wall Case made with TFL (Thermally Fused Laminate)

Brushed Aluminum Door Frame with Clear Safety Glass

3MM Edge Standard on Doors, Drawers and Work Surfaces

One Adjustable Shelf (Shown with Two Shelves)

Blum Hinges

Standard Pulls-Brushed "D" Style Handle

Single Lock or Double Lock Available

<u>Item</u>	<u>List</u>	<u>Width</u>	<u>Depth</u>	<u>Height</u>	<u>Cabinet Weight</u>
1814CA-SDWC	749.00	18	14	30	30 lbs.
3614CA-DDWC	1226.00	36	14	30	60 lbs.

Please Specify Left or Right by Denoting "L" or "R" at the end of the item number

Additional Sizes Available

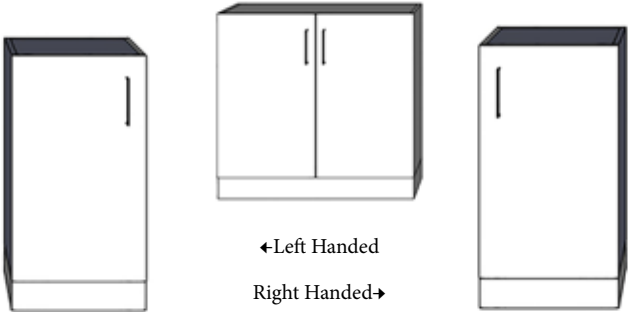
Sanitary Slope Top for Wall Cabinets



<u>Item</u>	<u>List</u>	<u>Width</u>	<u>Depth</u>	<u>Height</u>	<u>Cabinet Weight</u>
18SLT	96.00	18	17.625	18	10 lbs.
36SLT	142.00	36	17.625	18	14 lbs.

Additional Sizes Available

Full Door Base Cabinets



Base Case made with TFL (Thermally Fused Laminate)

Doors made with TFL (Thermally Fused Laminate)

3MM Edge Standard on Doors, Drawers and Work Surfaces

One Adjustable Shelf

Blum Hinges

Standard Pulls-Brushed "D" Style Handle

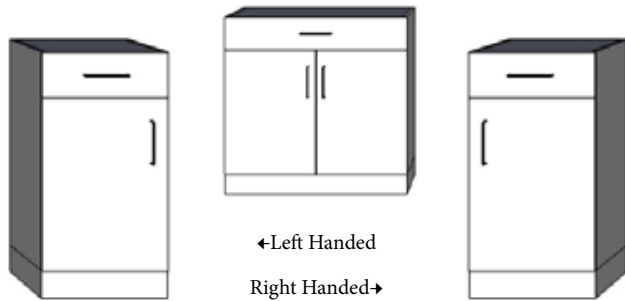
Single Lock or Double Lock Available

<u>Item</u>	<u>List</u>	<u>Width</u>	<u>Depth</u>	<u>Height</u>	<u>Cabinet Weight</u>
1818-SDC	584.00	18	17.5	35	55 lbs.
3618-DDC	785.00	36	17.5	35	100 lbs.
1824-SDC	633.00	18	23.5	35	60 lbs.
3624-DDC	852.00	36	23.5	35	110 lbs.

Please Specify Left or Right by Denoting "L" or "R" at the end of the item number

Additional Sizes Available

Door/Drawer Base Cabinets



Base Case made with TFL (Thermally Fused Laminate)

Doors made with TFL (Thermally Fused Laminate)

3MM Edge Standard on Doors, Drawers and Work Surfaces

One Adjustable Shelf

Blum Hinges

Standard Pulls-Brushed "D" Style Handle

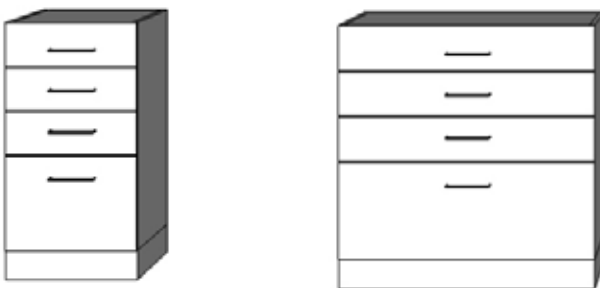
Single Lock or Double Lock Available

<u>Item</u>	<u>List</u>	<u>Width</u>	<u>Depth</u>	<u>Height</u>	<u>Cabinet Weight</u>
1818-SDDRWC	670.00	18	17.5	35	55 lbs.
3618-DDDRWC	896.00	36	17.5	35	105 lbs.
1824-SDDRWC	722.00	18	23.5	35	65 lbs.
3624-DDDRWC	967.00	36	23.5	35	120 lbs.

Please Specify Left or Right by Denoting "L" or "R" at the end of the item number

Additional Sizes Available

Three Drawer/File Base Cabinets



Base Case made with TFL (Thermally Fused Laminate)

Doors made with TFL (Thermally Fused Laminate)

3MM Edge Standard on Doors, Drawers and Work Surfaces

3-6" Drawers

1-12" File

Standard Pulls-Brushed "D" Style Handle

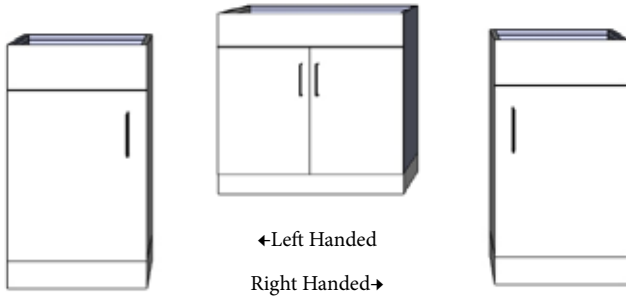
Single Lock or Gang Available

<u>Item</u>	<u>List</u>	<u>Width</u>	<u>Depth</u>	<u>Height</u>	<u>Cabinet Weight</u>
1818-3BFC	1083.00	18	17.5	35	60 lbs.
3618-3BFC	1258.00	36	17.5	35	110 lbs.
1824-3BFC	1160.00	18	23.5	35	70 lbs.
3624-3BFC	1410.00	36	23.5	35	130 lbs.

Please Specify Left or Right by Denoting "L" or "R" at the end of the item number

Additional Sizes Available

Sink Base Cabinets



Base Case made with TFL (Thermally Fused Laminate)

Doors made with TFL (Thermally Fused Laminate)

3MM Edge Standard on Doors, Drawers and Work Surfaces

Blum Hinges

Standard Pulls-Brushed "D" Style Handle

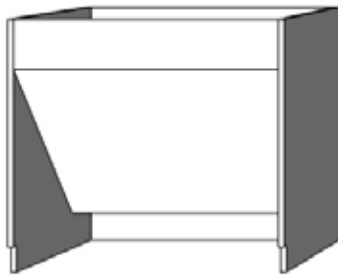
Single Lock or Double Lock Available

<u>Item</u>	<u>List</u>	<u>Width</u>	<u>Depth</u>	<u>Height</u>	<u>Cabinet Weight</u>
1818-SDSC	585.00	18	17.5	35	55 lbs.
3618-DDSC	785.00	36	17.5	35	105 lbs.
1824-SDSC	633.00	18	23.5	35	65 lbs.
3618-DDSC	852.00	36	23.5	35	120 lbs.

Please Specify Left or Right by Denoting "L" or "R" at the end of the item number

Additional Sizes Available

ADA Sink Base Cabinet



Sink Base made with TFL (Thermally Fused Laminate)

Removable Front Panel with RTF (Rigid Thermofoil)

Seamless Edges

Requires ADA Sink Drain and Trap (not provided)

Please Confirm all ADA Compliances to your Local Code

<u>Item</u>	<u>List</u>	<u>Width</u>	<u>Depth</u>	<u>Height</u>	<u>Cabinet Weight</u>
3624-ADASC	941.00	36	23.5	33	35 lbs.

Stainless Steel Sink Options



SSF1515 Faucet and Stainless Sink



SAS-Hand Sensor Faucet and Stainless Sink

<u>Item</u>	<u>List</u>
SSF1515	550.00
SAS	1397.00
SNKCO	84.00

Cut-Outs and Trash Ring Cut-Out with Grommet

<u>Item</u>	<u>List</u>	<u>Diameter</u>
2-CO (2")	54.00	2"
4-CO (4")	54.00	4"
6-TRCO (Trash)	118.00	6"

Wall Mount Lap Top Station



Wall Case made with TFL (Thermally Fused Laminate)

Seamless Cabinet Doors are RTF (Rigid Thermofoil)

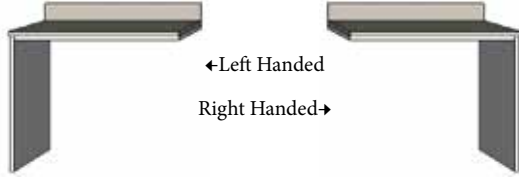
Seamless Edges

Single Lock Available

Available with Internal Locking Pharmaceutical Insert-LPC

<u>Item</u>	<u>List</u>	<u>Width</u>	<u>Depth</u>	<u>Height</u>	<u>Cabinet Weight</u>
PWMLTS	913.00	20	3"	20	20 lbs.
PWMLTS-LPC	985.00	20	3"	20	25 lbs.

Desk Returns with Back Splash

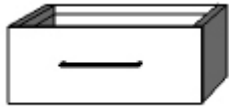


Sink Base made with TFL (Thermally Fused Laminate)
Removable Seamless Front Panel with RTF (Rigid Thermofoil)
*Depth Shown with and without Core Wall Added

<u>Item</u>	<u>List</u>	<u>Width</u>	<u>Depth</u>	<u>Height</u>	<u>Cabinet Weight</u>
3624-DR	330.00	36	23.5	30	30 lbs.

Please Specify Left or Right by Denoting "L" or "R" at the end of the item number

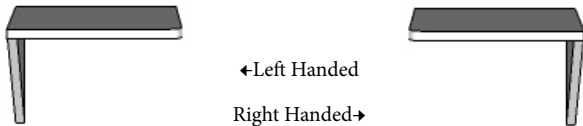
Center Drawer for Desk Return



Wall Case made with TFL (Thermally Fused Laminate)
3MM Edge Standard on Doors, Drawers and Work Surfaces
Standard Pulls- "D" Style Handle
Single Lock

<u>Item</u>	<u>List</u>	<u>Width</u>	<u>Depth</u>	<u>Height</u>	<u>Cabinet Weight</u>
CD	123.00	15.25	19.625	2	15 lbs.

Lap Top Computer Trays and Flip-Up Lap Top Computer Trays



Wall Case made with TFL (Thermally Fused Laminate)
3MM Edge Standard on Doors, Drawers and Work Surfaces

<u>Item</u>	<u>List</u>	<u>Width</u>	<u>Depth</u>	<u>Height</u>	<u>Cabinet Weight</u>
18-LTT	183.00	18	18	18	30 lbs.
24-LTT	183.00	24	24	18	35 lbs.
18-FULTT	263.00	18	18	18	40 lbs.
24-FULTT	263.00	24	24	18	45 lbs.

Please Specify Left or Right by Denoting "L" or "R" at the end of the item number

HPL Work Surface with 3MM Edge Band-24” Depth

<u>Item</u>	<u>List</u>	<u>Width</u>	<u>Depth</u>	<u>Height</u>	<u>Cabinet Weight</u>
E24WSHPL18	116.00	19	24	1.1	12 lbs.
E24WSHPL24	152.00	25	24	1.1	14 lbs.
E24WSHPL30	189.00	31	24	1.1	16 lbs.
E24WSHPL36	225.00	37	24	1.1	20 lbs.
E24WSHPL42	262.00	43	24	1.1	24 lbs.
E24WSHPL48	299.00	49	24	1.1	28 lbs.
E24WSHPL54	335.00	55	24	1.1	32 lbs.
E24WSHPL60	372.00	61	24	1.1	34 lbs.
E24WSHPL66	408.00	67	24	1.1	37 lbs.
E24WSHPL72	445.00	73	24	1.1	41 lbs.
HPL24SS (Side Splash)	38.00			4	
HPLSCO (Sink Cut-Out)	32.00				

HPL Work Surface with 3MM Edge Band-18” Depth

<u>Item</u>	<u>List</u>	<u>Width</u>	<u>Depth</u>	<u>Height</u>	<u>Cabinet Weight</u>
E18WSHPL18	89.00	19	18	1.1	12 lbs.
E18WSHPL24	114.00	25	18	1.1	14 lbs.
E18WSHPL30	142.00	31	18	1.1	16 lbs.
E18WSHPL36	169.00	37	18	1.1	20 lbs.
E18WSHPL42	197.00	43	18	1.1	24 lbs.
E18WSHPL48	224.00	49	18	1.1	28 lbs.
E18WSHPL54	251.00	55	18	1.1	32 lbs.
E18WSHPL60	279.00	61	18	1.1	34 lbs.
E18WSHPL66	306.00	67	18	1.1	37 lbs.
E18WSHPL72	334.00	73	18	1.1	41 lbs.
HPL18SS (Side Splash)	38.00			4	
HPLSCO (Sink Cut-Out)	32.00				

HPL Back Splash with 3MM Edge Band

<u>Item</u>	<u>List</u>	<u>Width</u>	<u>Depth</u>	<u>Height</u>	<u>Cabinet Weight</u>
EBSHPL18	19.00	19	1.1	4	2 lbs.
EBSHPL24	25.00	25	1.1	4	3 lbs.
EBSHPL30	31.00	31	1.1	4	4 lbs.
EBSHPL36	38.00	37	1.1	4	5 lbs.
EBSHPL42	44.00	43	1.1	4	6 lbs.
EBSHPL48	50.00	49	1.1	4	7 lbs.
EBSHPL54	56.00	55	1.1	4	8 lbs.
EBSHPL60	62.00	61	1.1	4	9 lbs.
EBSHPL66	68.00	67	1.1	4	10 lbs.
EBSHPL72	74.00	73	1.1	4	11 lbs.

Bactericidal Work Surface with 3MM Edge Band-24” Depth

<u>Item</u>	<u>List</u>	<u>Width</u>	<u>Depth</u>	<u>Height</u>	<u>Cabinet Weight</u>
E24WSB18	134.00	19	24	1.1	11 lbs.
E24WSB24	176.00	25	24	1.1	14 lbs.
E24WSB30	218.00	31	24	1.1	17 lbs.
E24WSB36	260.00	37	24	1.1	20 lbs.
E24WSB42	302.00	43	24	1.1	23 lbs.
E24WSB48	345.00	49	24	1.1	26 lbs.
E24WSB54	387.00	55	24	1.1	29 lbs.
E24WSB60	429.00	61	24	1.1	32 lbs.
E24WSB66	471.00	67	24	1.1	35 lbs.
E24WSB72	513.00	73	24	1.1	38 lbs.
B24SS (Side Splash)	38.00			4	
BSCO (Sink Cut-Out)	33.00				

Bactericidal Work Surface with 3MM Edge Band-18” Depth

<u>Item</u>	<u>List</u>	<u>Width</u>	<u>Depth</u>	<u>Height</u>	<u>Cabinet Weight</u>
E18WSB18	100.00	19	18	1.1	11 lbs.
E18WSB24	132.00	25	18	1.1	14 lbs.
E18WSB30	163.00	31	18	1.1	17 lbs.
E18WSB36	195.00	37	18	1.1	20 lbs.
E18WSB42	227.00	43	18	1.1	23 lbs.
E18WSB48	258.00	49	18	1.1	26 lbs.
E18WSB54	290.00	55	18	1.1	29 lbs.
E18WSB60	322.00	61	18	1.1	32 lbs.
E18WSB66	353.00	67	18	1.1	35 lbs.
E18WSB72	385.00	73	18	1.1	38 lbs.
B18SS (Side Splash)	38.00			4	
BSCO (Sink Cut-Out)	33.00				

Bactericidal Back Splash with 3MM Edge Band

<u>Item</u>	<u>List</u>	<u>Width</u>	<u>Depth</u>	<u>Height</u>	<u>Cabinet Weight</u>
EBSBS18	22.00	19	1.1	4	3 lbs.
EBSBS24	29.00	25	1.1	4	4 lbs.
EBSBS30	36.00	31	1.1	4	5 lbs.
EBSBS36	43.00	37	1.1	4	6 lbs.
EBSBS42	50.00	43	1.1	4	7 lbs.
EBSBS48	57.00	49	1.1	4	8 lbs.
EBSBS54	64.00	55	1.1	4	9 lbs.
EBSBS60	71.00	61	1.1	4	10 lbs.
EBSBS66	79.00	67	1.1	4	11 lbs.
EBSBS72	86.00	73	1.1	4	12 lbs.

LG HiMac Solid Surface Top with Integrated Back Splash-24" Depth Level 1

<u>Item</u>	<u>List</u>	<u>Width</u>	<u>Depth</u>	<u>Height</u>	<u>Cabinet Weight</u>
E24WSSSIBS24	848.00	25	24	1	20 lbs.
E24WSSSIBS30	1051.00	31	24	1	25 lbs.
E24WSSSIBS36	1255.00	37	24	1	30 lbs.
E24WSSSIBS42	1458.00	43	24	1	35 lbs.
E24WSSSIBS48	1661.00	49	24	1	40 lbs.
E24WSSSIBS54	1865.00	55	24	1	45 lbs.
E24WSSSIBS60	2068.00	61	24	1	50 lbs.
E24WSSSIBS66	2272.00	67	24	1	55 lbs.
E24WSSSIBS72	2475.00	73	24	1	60 lbs.
SS24SS (Side Splash)	94.00		24	3.75	
SSSCO (Sink Cut-Out)	57.00				
SSIS1311 (Integrated Sink)	1072.00				

LG HiMac Solid Surface Top with Loose Back Splash-24" Depth Level 1

<u>Item</u>	<u>List</u>	<u>Width</u>	<u>Depth</u>	<u>Height</u>	<u>Cabinet Weight</u>
E24WSSSBS24	848.00	25	24	1	18 lbs.
E24WSSSBS30	1051.00	31	24	1	23 lbs.
E24WSSSBS36	1255.00	37	24	1	27 lbs.
E24WSSSBS42	1458.00	43	24	1	32 lbs.
E24WSSSBS48	1661.00	49	24	1	37 lbs.
E24WSSSBS54	1865.00	55	24	1	41 lbs.
E24WSSSBS60	2068.00	61	24	1	46 lbs.
E24WSSSBS66	2272.00	67	24	1	51 lbs.
E24WSSSBS72	2475.00	73	24	1	55 lbs.
SS24SS (Side Splash)	94.00			3.75	
SSSCO (Sink Cut-Out)	57.00				
SSIS1311 (Integrated Sink)	1072.00				

LG HiMac Solid Surface Top with No Back Splash-24" Depth Level 1

<u>Item</u>	<u>List</u>	<u>Width</u>	<u>Depth</u>	<u>Height</u>	<u>Cabinet Weight</u>
E24WSSS24	727.00	25	24	1	14 lbs.
E24WSSS30	901.00	31	24	1	18 lbs.
E24WSSS36	1075.00	37	24	1	20 lbs.
E24WSSS42	1250.00	43	24	1	24 lbs.
E24WSSS48	1424.00	49	24	1	28 lbs.
E24WSSS54	1598.00	55	24	1	31 lbs.
E24WSSS60	1773.00	61	24	1	35 lbs.
E24WSSS66	1947.00	67	24	1	42 lbs.
E24WSSS72	2122.00	73	24	1	46 lbs.
SS24SS (Side Splash)	94.00			3.75	
SSSCO (Sink Cut-Out)	57.00				
SSIS1311 (Integrated Sink)	1072.00				

LG HiMacs Solid Surface Top with Integrated Back Splash-18" Depth Level 1

<u>Item</u>	<u>List</u>	<u>Width</u>	<u>Depth</u>	<u>Height</u>	<u>Cabinet Weight</u>
E18WSSSIBS24	666.00	25	18	1	18 lbs.
E18WSSSIBS30	826.00	31	18	1	23 lbs.
E18WSSSIBS36	986.00	37	18	1	28 lbs.
E18WSSSIBS42	1146.00	43	18	1	33 lbs.
E18WSSSIBS48	1305.00	49	18	1	38 lbs.
E18WSSSIBS54	1465.00	55	18	1	43 lbs.
E18WSSSIBS60	1625.00	61	18	1	48 lbs.
E18WSSSIBS66	1785.00	67	18	1	53 lbs.
E18WSSSIBS72	1945.00	73	18	1	57 lbs.
SS18SS (Side Splash)	94.00		18	3.75	
SSSCO (Sink Cut-Out)	57.00				
SSIS1311 (Integrated Sink)	1072.00				

LG HiMacs Solid Surface Top with Loose Back Splash-18" Depth Level 1

<u>Item</u>	<u>List</u>	<u>Width</u>	<u>Depth</u>	<u>Height</u>	<u>Cabinet Weight</u>
E18WSSSBS24	666.00	25	18	1	17 lbs.
E18WSSSBS30	826.00	31	18	1	22 lbs.
E18WSSSBS36	986.00	37	18	1	27 lbs.
E18WSSSBS42	1146.00	43	18	1	32 lbs.
E18WSSSBS48	1305.00	49	18	1	37 lbs.
E18WSSSBS54	1465.00	55	18	1	42 lbs.
E18WSSSBS60	1625.00	61	18	1	47 lbs.
E18WSSSBS66	1785.00	67	18	1	52 lbs.
E18WSSSBS72	1945.00	73	18	1	57 lbs.
SS18SS (Side Splash)	94.00			3.75	
SSSCO (Sink Cut-Out)	57.00				
SSIS1311 (Integrated Sink)	1072.00				

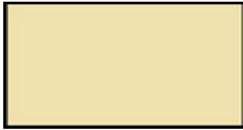
LG HiMacs Solid Surface Top with No Back Splash-18" Depth Level 1

<u>Item</u>	<u>List</u>	<u>Width</u>	<u>Depth</u>	<u>Height</u>	<u>Cabinet Weight</u>
E18WSSS24	545.00	25	18	1	14 lbs.
E18WSSS30	676.00	31	18	1	18 lbs.
E18WSSS36	806.00	37	18	1	20 lbs.
E18WSSS42	937.00	43	18	1	24 lbs.
E18WSSS48	1068.00	49	18	1	28 lbs.
E18WSSS54	1199.00	55	18	1	31 lbs.
E18WSSS60	1330.00	61	18	1	35 lbs.
E18WSSS66	1460.00	67	18	1	42 lbs.
E18WSSS72	1591.00	73	18	1	46 lbs.
SS18SS (Side Splash)	94.00			3.75	
SSSCO (Sink Cut-Out)	57.00				
SSIS1311 (Integrated Sink)	1072.00				

Intensa Casework Finishes



White



Almond



Tenino Oak



Maple



Nina Maple



Folkstone Gray



Pinta Maple



Clark Cherry



Drake



Brazillian Walnut



Wild Cherry



Mahogany

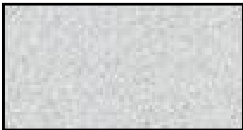


Tenino Gray

Wilson Art HPL Top Surface Finishes



Designer White



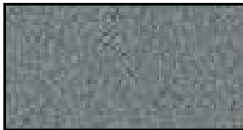
Titanium EV



Crisp Linen



Olive Legacy



Carbon EV



Neutral Glace



Tumbled Mosaic



Khaki Brown



Tawny Legacy



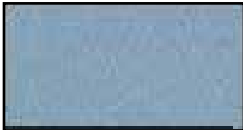
Chai Tea



Kiwi



Sprout



Aqua Fizz



Woolamai Brush



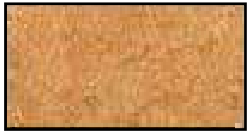
Venetian Ale

These Colors are Digital Reproductions and May Vary

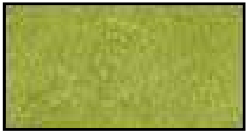
Bactericidal Top Surface Finishes



Edelweiss



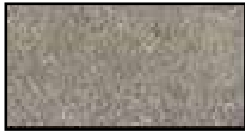
Sahara



Green



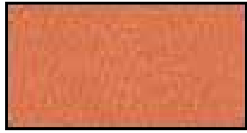
Fresco Blue



Serene Gray



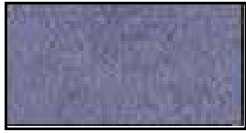
Sand



Stucco Russo



Laguna



Hacinth



Slate Gray

Standard 3MM Edge Banding Colors



White



Almond



Stone



Gray



Beige

These Colors are Digital Reproductions and May Vary

Intensa Casework Solid Surface Level 1

Nordic White Opal White Artic White Alpine White Ivory White

Solid Surface Integrated Sink-White Only
 Level 2 and Level 3 Solide Surfaces Available at an Up-Charge

Intensa Casework Solid Surface Integrated Sink

Solid Surface Integrated Sink-White Only
 Standard Size-13”L x 11” W x 9”D
 Faucet Not Included with Sink

Lock Options

<u>Item</u>	<u>List</u>
SL-Single Lock	70.00
DL-Double Lock	82.00
GL-Gang Lock	402.00
CL-Combination Lock	142.00
Digital and Wireless Locks Available	

Intensa, Inc.
PO Box 5981
High Point, NC 27262
P-888-636-2660 F-336-884-4007

www.intensa.net