

# 2016 Product and Specification Guide Re-Configurable Modular Cabinetry and Case Work

## A Better Healing Environment





## Table of Contents

1.	Table of Contents	Page 3
2.	Introduction to Pulse Plus and Typical Installations	Page 4-7
3.	Features and Benefits	Page 8-9
4.	LEED Credits	Page 10
5.	Environmentals	Page 10
6.	Warranty	Page 11
7.	Terms and Conditions	Page 12
8.	Materials and Finishes	Page 13
9.	Core Wall Specifications with Pricing	Page 14-15
10.	Wall Cabinets	Page 16
11.	Sanitary Slope Tops for Wall Cabinets	Page 16
12.	Glove Box Cut Outs	Page 16
13.	Base Cabinets/Drawer Base Cabinets	Page 17-18
14.	Sink Cabinets	Page 19-20
15.	ADA Sink Cabinets	Page 19
16.	Cut-Outs and Faucet Options	Page 20
17.	Pulse Plus Seamless Wall Panels	Page 21
18.	Wardrobe Cabinets	Page 21
19.	Storage Cabinets	Page 21
20.	Wall Mount Lap Top Station	Page 22
21.	Solid Surface Options	Page 22
22.	Lock Options	Page 22
23.	Pulse Plus Case Work Finishes	Page 23

Installation Instructions Available From Intensa

Evolving healthcare requires medical interiors to be flexible keeping pace with providers needs along with medical and diagnostic advancements. Healthcare facilities should enable these ongoing advances along with providing the patient with an environment that promotes positive healing outcomes. Pulse Plus modular cabinetry is the ideal design to support today's healthcare interiors.

## Reconfigurable Modular Cabinetry and Case Work





Pulse<sup>+</sup>plus

**A Better Healing Environment**

Reconfigurable Modularity

HAI Awareness

Environmental

Architectural Vision

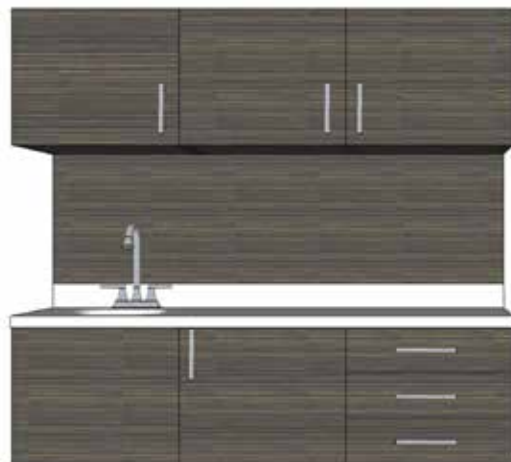
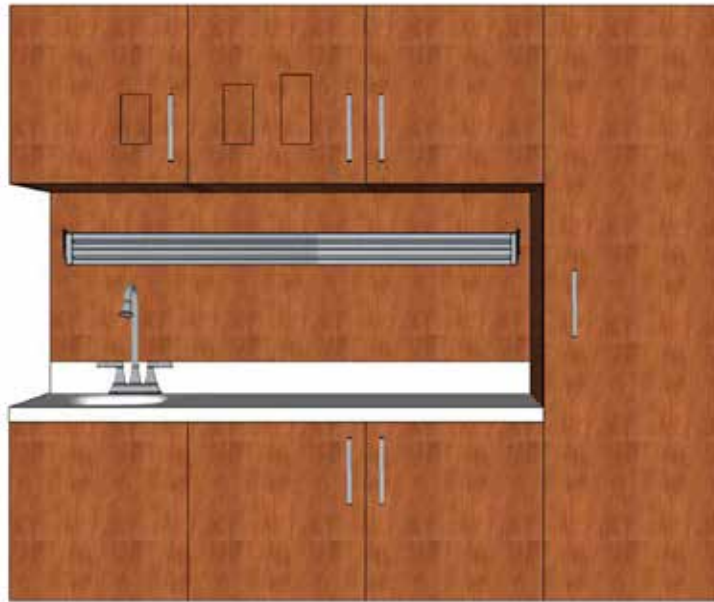
Adaptation

Sustainable Value



Installation Instructions Available from Intensa, Inc.

## Typical Exam Room Set-Ups



## Features and Benefits

### Reconfigurable Modularity

Pulse Plus is a re-configurable modular system of interchangeable components for today's health care facilities. Configurations for patient rooms, exam rooms, caregiver work areas, and other clinacal spaces are easily assembled, removed, rearranged and refreshed while damaged product can be easily replaced without demolition or incineration which can be extremely costly to the medical practice.

### HAI Awareness

Along with being aesthetically gratifying, Pulse Plus was designed to be easily cleaned, offering finishes that are durable and will hold up to today's stringent cleaner. All Pulse Plus finishes are applicable to today's health care facilities stringent house keeping requirements. Most importantly, cabinetry clearance off the floor provides accessible cleaning without damage to the cabinetry.

### Environmental

Pulse Plus supports practical, economical and sustainable manufacturing aligning itself with suppliers who share our vision and commitment to a "green" stewardship toward our environment. Our Leed edorsements promote the reduction of air pollutants, waste, and materials needed, while improving air quality and occupant wellness.

### Architectural Visions

Pulse Plus allows today's achitects, designers and facilty planners to create healing and willness zones offering an extensive selection of design options. These options promote all aspects of wellness to the patient and families while maximizing all available effeciencies to health care providers.

### Adaptation

Rapidly changing health care facilities emerging as leaders today face challenges of obsolescence tomorrow. Pulse Plus's continu-ously evolving designs and modu-larity help today's health care providers keep pace with today's patient needs and requirements. Minimize your facilities adaptation expenses using Pulse Plus.

### Sustainable Value

Pulse Plus's flexible solutions allows for cost reductions through installation ease, design updates, re-configuration of existing product and replacement of damage components. In addition, our re-configurble modularity helps reduce disposal and incineration cost of existing fixed or built-in cabinetry. Pulse Plus depreciates in 7 years as compared to 39 years for a fixed or built-in product.

## A Better Healing Environment





## Features and Benefits

- Intensa, Inc. reconfigurable modular caseworks can be depreciated in 7 years vs. the 39 year depreciation of built in cabinets. Consult tax advisor on specific applications.
- Intensa, Inc. has a 5 year Limited Warranty. See full details of the Limited Warranty. Most competitors or built-in products do not carry a full 5 year warranty.
- Intensa, Inc. caseworks can be reconfigured and moved at any future time to better accommodate the work that is being accomplished. Built in cabinets cannot be moved or cannot be moved as quickly and easily.
- Intensa, Inc. uses cam lock, steel on steel construction and all units are shipped fully assembled which means true and accurate alignment of cabinets is assured. They are not shipped in pieces and parts that may mean that parts do not align properly and additional cost to the installers.
- Standard Work Surfaces is Solid Surface (SS) with integrated back splash.
- All cabinets are finished on the inside and the outside. The inside of cabinets looks the same as the outside and gives a finished look as well as prevents any absorption by the substrate. All cabinets are designed with white backs for enhanced vision.
- All cabinets, both base and wall units, are finished on all four sides for sanitary control.
- All door and drawer edges are wrapped in durable and seamless RTF. Back edges of the base and wall cabinets are finished to avoid absorption of water or other matter.
- Intensa, Inc. uses decorative thermally fused laminate on case sides, backs and supporting panels which meets the testing requirements of BIFMA/ANSI laminate requirements.
- Wall hanging hardware is easily adjustable in the field for proper working of the cabinets and is hidden from view after adjustment by protective cover.
- Hinges are Blume 110 degree hinges are easily adjustable in the field with a simple Phillips screwdriver for proper alignment at the time of initial installation and later on if units are changed in position.
- Intensa, Inc. can provide drawings 2D & 3D plus a quotation at no charge. Customer will need to submit cad or dimensional drawings.
- Casework is also Urea Formaldehyde free, meeting more stringent specifications than ANSI A208.1-199 and ANSI A208.2-2002 standards.
- Can contribute to LEED points for materials and resources 4.1, 4.2, 5.1, and 5.2 due to our use of 100% recycled wood fiber. We can also contribute to LEED points for materials and resources.

## Environmental Commitments and LEED Credits

<u>LEED Category</u>	<u>Objective</u>	<u>Requirements</u>	<u>Potential Point</u>	<u>Intensa Compliance</u>
Indoor Environmental Quality (IEQ)	Improve air quality and occupant wellness.	Product with no added Urea Formaldehyde (UF)		Panels with zero added UF Powder Paint with zero VOC Polystyrene with zero PVC Germ & allergy killing surface
	Eliminate and reduce indoor pollutants or harmful	Hazardous Air Pollutants (HAP) Volatile Organic Compounds (VOC) Low emitting materials Pollutant Control	1-5 1	
Material and Resource (MR)	Reduce environmental impact, waste, and material's needed Source locally	MR 4.1-10% recycle content MR 4.2-20% recycle content MR 5.2-source within 500 miles.	1 1 1	100% recycled cores High cycle content for plastics and steel. Natural surfacing material Local southeast US manufacturing "Green" Facility
Innovation and Design (CI)	Environmentally practical strategies and behaviors.	Improved sustainable building strategies and knowledge.	1-4	Eliminate millwork obsolescence, replacement Impacts and cost. Modular Design for easy reuse and maximum service to life.
Innovation in Upgrades, Operations and Maintenance	Expand LEED and sustainable building practices & knowledge.	Exceed required LEED performance levels and innovate.	1-4	Self-sanitizing, low maintenance surfaces. Reconfigure to upgrade with minimal cost and zero environmental impact.

## Case Work Limited Warrantanty

Intensa warrants its products, to the original owner, to the extent of the purchase price, to be free from defects in material and workmanship for a period of 5 years from the date of the original shipment, if the products are properly installed, maintained, serviced and used under normal conditions. Products are not warranted against the effects of normal wear and tear, misuse, negligence, or accident. Warranty is void with respect to any product which has been modified after initial installation. Standard products are not warranted against damage caused by exposure to heat or moisture. Products are not warranted against problems or damage caused by the failure of walls to support the weight imposed by the attachment of cabinets. Products are not warranted against the effects of overloading cabinets and/or shelves.

The obligation under this warranty of Intensa, Inc. is limited to repairing without charge, or replacing, all products which Intensa is satisfied were defective when originally shipped. Claims under this warranty are to be reported in writing with supporting digital photograph as soon as the problem is known. Claims for shortages or damage present on delivery shall be made within 15 days of delivery. Claims for shipping damage are not covered by this warranty, and shall be presented to the carrier as soon as possible after delivery.

**Intensa, Inc. cannot file a freight claim on behalf of its customers.**

This warranty is exclusive and in lieu of all other warranties and remedies whatsoever, including but not limited to implied warranties. Intensa, Inc. shall have no liability whatsoever for damages caused by transportation, accidents, fire, unauthorized alteration, or abnormal wear or abuse, nor shall Intensa, Inc. have any liability whatsoever for any incidental or consequential damages. This includes without limitation, lost profits or as such damages arising from the design, manufacture sale, delivery, installation, repair, operation or use of any products of Intensa, Inc. or any actual/alleged failure or defect in products of Intensa, Inc.

### **\*\*\*Casework Warning\*\*\***

Intensa does not provide fasteners for wall hanging applications. Installers are responsible for furnishing and installing sufficient numbers of the correct fasteners for the field conditions encountered. Installer should always attach wall hanger device into a structural member, or into a heavy duty toggle mechanism, as appropriate for the wall construction and the anticipated load requirements.

**Installers are responsible for furnishing and installing adequate fasteners for field conditions encountered.**

## Features and Benefits

**Payment Terms:** Regular terms are Net 30 days (date of invoice). All invoices are dated the day of shipment. A late payment charge of 1 1/2 % per month, 18% per annum, on past due accounts or the highest amount permitted by law will be assessed. To open an account the names and addresses of five trades references, your company bank and resale number will be required. If an account has not been established, orders will be handled on a Proforma, COD or credit card basis. Intensa, Inc. accepts MasterCard, Visa, AMX and Discover for payment.

**Intensa will additionally add a 2% fee for any payments made after the 10th billing day of invoice for credit card payments.**

Intensa, Inc. reserves the right to assign invoices to a factoring company.

**Freight Policy:** All freight charges are prepaid and allowed unless noted. Prices are determined by zone location to which is shipped. All shipments are F.O.B. High Point, NC, unless specified. (Title of goods transfers to purchaser when shipment leaves our dock). All orders will be shipped via best carrier available at time of shipment. Upgrade shipments are available, contact customer service for additional shipping charges.

### Additional Delivery Charges:

Residential Delivery Charges-	Amount billed by carrier.
Address Correction-	Amount billed by carrier.
Definite Delivery Charges for Freight-	Amount billed by carrier.
Secured Area Delivers-	Amount billed by carrier.

**Freight Claims:** All shipments should be carefully inspected for damage upon receipt. Any carton damage should be noted on the freight bill or delivery receipt. **Concealed damage requires immediate inspection by carrier within 15 days from receipt of goods. Intensa, Inc. cannot file a freight claim on behalf of its customers.**

**Returning Merchandise:** Arrangements must be made in writing prior to the return of any merchandise. Please call customer service at (336)-884-4096 for further information. Unauthorized returns will not be accepted and Intensa, Inc. will not be responsible for any resulting charges incurred. **Only new product in the original carton may be returned per the following restocking charges. Replacement Exam Bed Tops are custom made and not returnable for credit.**

### Return Policy

Return with reorder.  
 Merchandise less than six months.  
 Merchandise greater than six months, less than one year.  
 Goods greater than one year.  
 Merchandised returned that is unsuitable for resale.

### Credit

75% Plus shipping charges.  
 65% Plus shipping charges.  
 50% Plus shipping charges.  
 No credit allowed.  
 No credit allowed.

Intensa, Inc. error in processing can be returned at no charge.

**Ordering Information:** All orders for product must be submitted on a purchase order via fax or email. No verbal orders will be taken unless order is prepaid. Payment can be made with company check or credit card (MasterCard, Visa, AMX and Discover ). Contact customer service for more details concerning prepaids. The following information is required on all purchase orders.

**Quantity of each model, Model Number, Upholstery Pattern/Color/Laminate and Selection of Options**

**Caseworks Cancellation-**Orders cancelled prior to the start of production are subject to expenses incurred in processing order. No cancellations will be accepted after the start of production.

**Responsibility for Installation-**Installation is the responsibility of the purchaser and/or the installer selected by the purchaser. Intensa is not responsible or liable for damage or injury caused by improper installation, including but not limited to the failure of installers to provide adequate fasteners and other support for the load imposed by the weight of cabinets and their contents.

Intensa, Inc. is dedicated to providing you and your customer with high quality products. In doing so, we reserve the right to improve, discontinue or modify designs with new materials and or manufacturing techniques without prior written notice.

**Intensa, Inc.**

## Standard Materials and Finishes for Case Work

### Thermally Fused Laminate Finish (TFL) and Rigid Thermafoil Finishes (RTF) for Cabinet Finishes

<u>Solids</u>	<u>Wood Grains</u>		
White	Tenino Oak	Clark Cherry	Wild Cherry
Almond	Maple	Drake	Mahogany
Folkstone Gray	Nina Maple	Brazilian Walnut	Tenino Gray
Black	Pinta Maple		

## Solid Surface Top Finishes

### LG HiMacs Solid Surface Finishes-Level 1

Nordic White	Opal White	Artic White
Alpine White	Ivory White	

### Solid Surface Sink-White

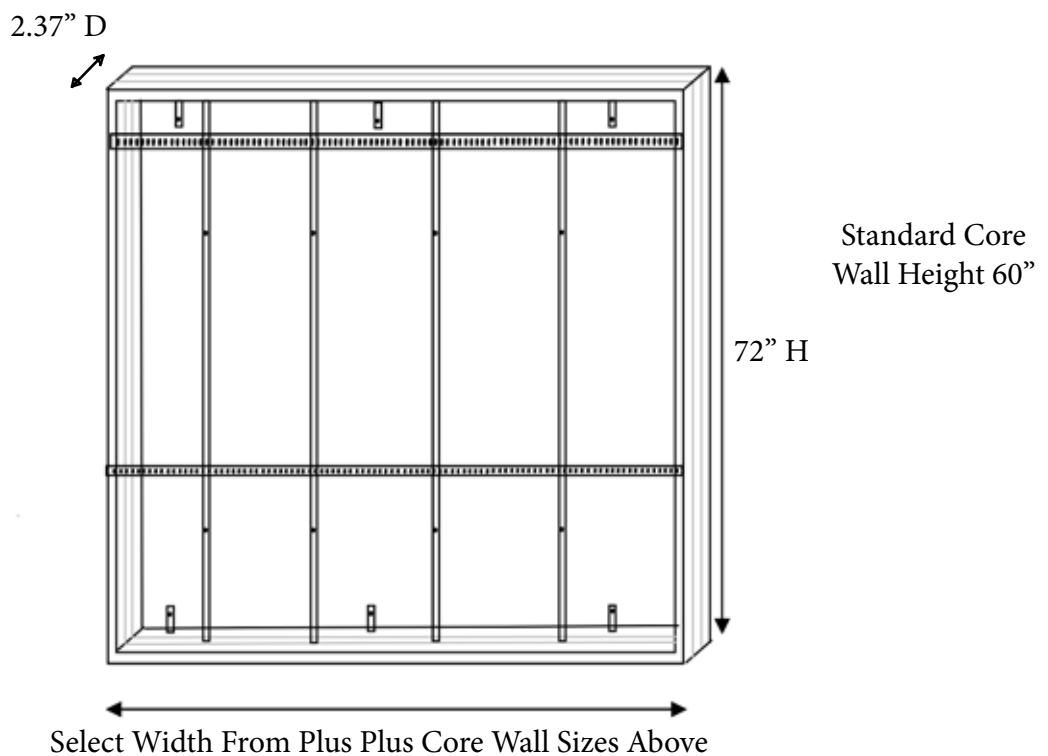
Level 2 and 3 Solid Surface Colors Available at an Up-Charge.

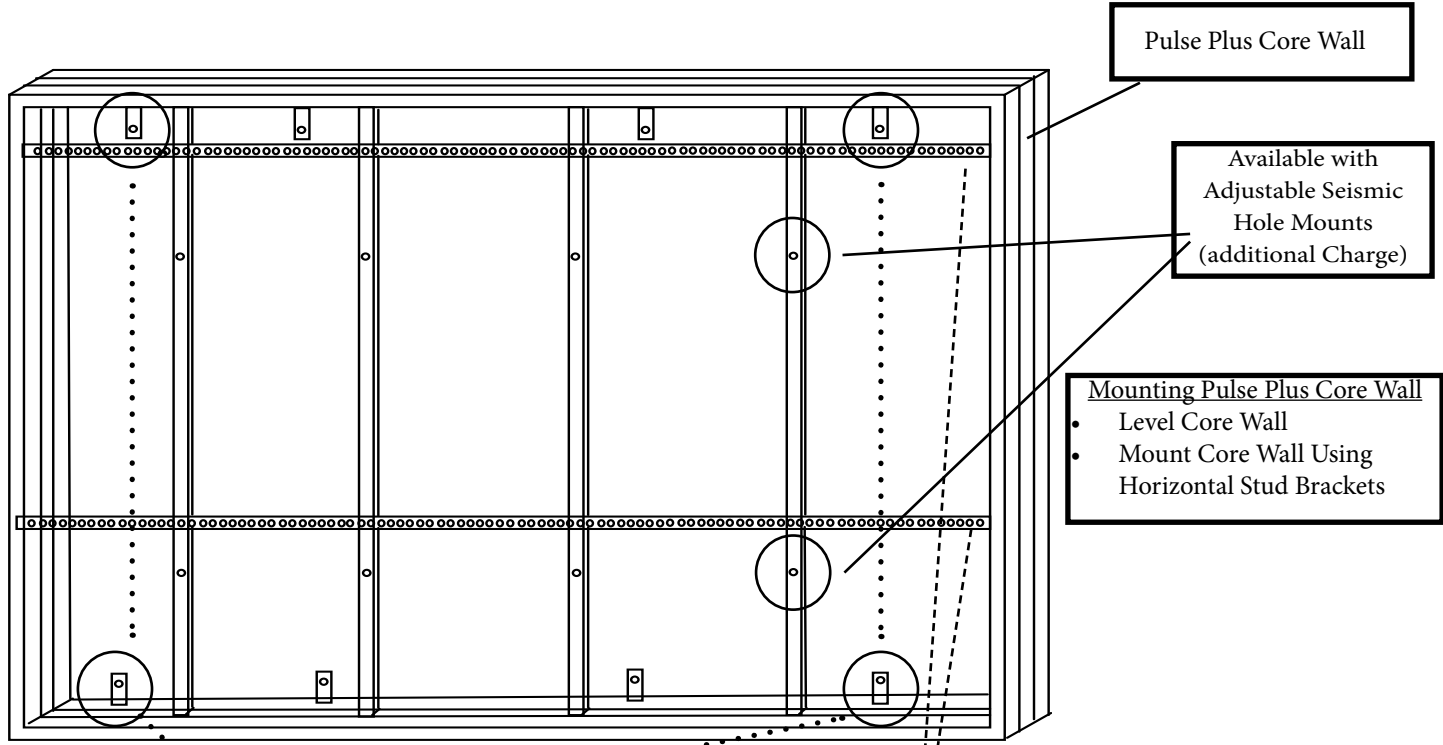


## Pulse Plus Core Wall Frames

PPC-18C	18" Wide Pulse Plus Core Wall Mouning Frame	\$802.00
PPC-24C	24" Wide Pulse Plus Core Wall Mouning Frame	\$827.00
PPC-30C	30" Wide Pulse Plus Core Wall Mouning Frame	\$812.00
PPC-36C	36" Wide Pulse Plus Core Wall Mouning Frame	\$1055.00
PPC-42C	42" Wide Pulse Plus Core Wall Mouning Frame	\$1089.00
PPC-48C	48" Wide Pulse Plus Core Wall Mouning Frame	\$1301.00
PPC-54C	54" Wide Pulse Plus Core Wall Mouning Frame	\$1326.00
PPC-60C	60" Wide Pulse Plus Core Wall Mouning Frame	\$1499.00
PPC-66C	66" Wide Pulse Plus Core Wall Mouning Frame	\$1534.00
PPC-72C	72" Wide Pulse Plus Core Wall Mouning Frame	\$1720.00

Anything over 72" will require 2 or more Frames (For example-an 90" wall will need a PPC-72C and PPC-18C)

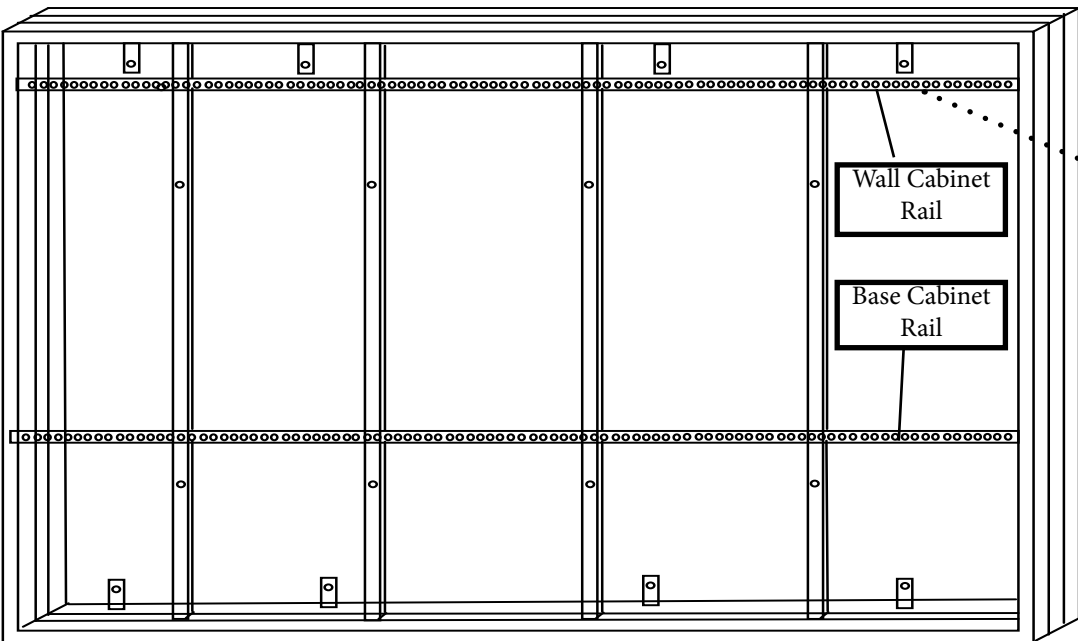




Adjustable Horizontal Stud Brackets

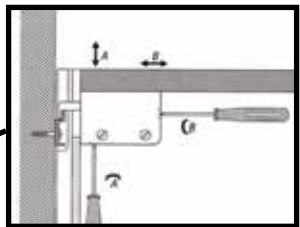
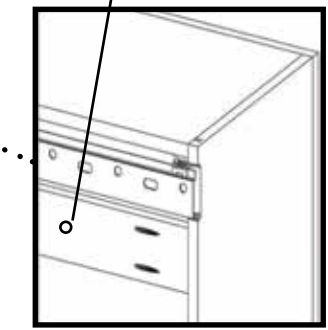
Horizontal Cabinet Hang Rail (Zip Rail)

Hole for Seismic Mounting on Back of Cabinet (Please Contact Factory for Upcharge)



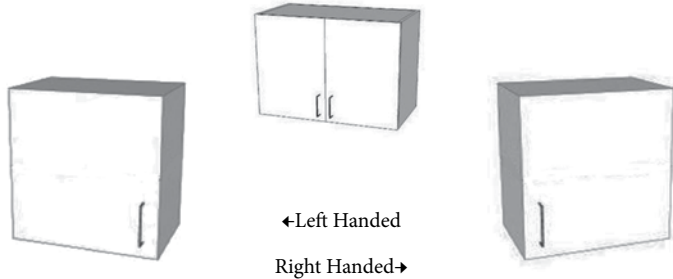
Wall Cabinet Rail

Base Cabinet Rail



- Wall and Base Cabinet Installation**
1. Remove Doors and Shelves
  2. Vertical Adjustment for Cabinets (Screw A)
  3. Horizontal Adjustment for Cabinets (Screw B)
  4. Anchor Vertical Seismic Mounts
  5. Replace and Align Cabinet Doors and Shelves

## Wall Cabinets



Wall Case made with TFL (Thermally Fused Laminate)

Seamless Cabinet Doors are RTF (Rigid Thermofoil)

One Adjustable Shelf

Blum Hingees

Standard Pulls-"T" Style Handle

Single Lock or Double Lock Available

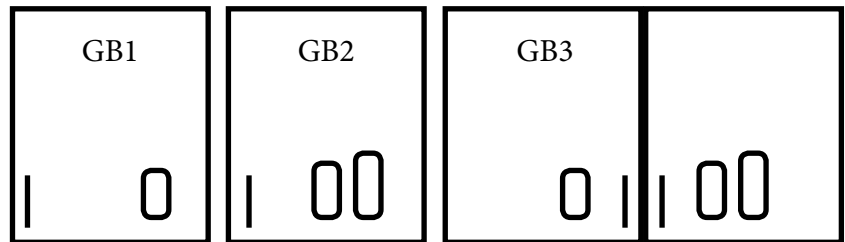
\*Depth Shown with and without Core Wall Added

<u>Item</u>	<u>List</u>	<u>Width</u>	<u>Depth</u>	<u>Height</u>	<u>Cabinet Weight</u>
PPWC181618	532.00	18	*16/18.375	18	30 lbs.
PPWC241618	579.00	24	*16/18.375	18	35 lbs.
PPWC301618	650.00	30	*16/18.375	18	40 lbs.
PPWC361618	706.00	36	*16/18.375	18	45 lbs.

Please Specify Left or Right by Denoting "L" or "R" at the end of the item number

## Glove Box Cut-Outs with Glove Bins for Wall Cabinets

<u>Item</u>	<u>List</u>
GB1	104.00
GB2	123.00
GB3	178.00



Please Specify: Small-S (3"x 4"), Medium-M (3"x 5") or Large-L (3"x 6") for Hole Size to Match Glove Size

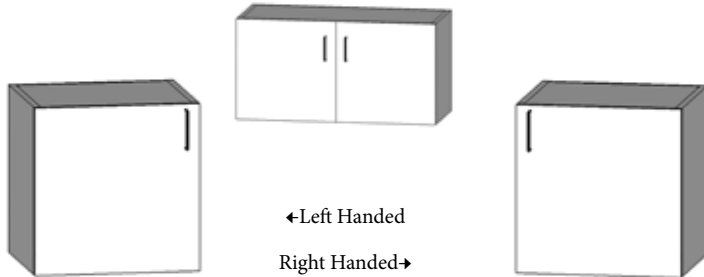
## Sanitary Slope Top for Wall Cabinets



<u>Item</u>	<u>List</u>	<u>Width</u>	<u>Depth</u>	<u>Height</u>	<u>Cabinet Weight</u>
PPWC18SLT	154.00	18	17.625	18	10 lbs.
PPWC24SLT	178.00	24	17.625	18	14 lbs.
PPWC30SLT	210.00	30	17.625	18	20 lbs.
PPWC36SLT	250.00	36	17.625	18	24 lbs.



## Base Cabinets



Wall Case made with TFL (Thermally Fused Laminate)

Seamless Cabinet Doors are RTF (Rigid Thermofoil)

One Adjustable Shelf

Blum Hingees

Standard Pulls-”T” Style Handle

Single Lock or Double Lock Available

\*Depth Shown with and without Core Wall Added

<u>Item</u>	<u>List</u>	<u>Width</u>	<u>Depth</u>	<u>Height</u>	<u>Cabinet Weight</u>
PPHC181618	532.00	18	*16/18.375	18	30 lbs.
PPHC241618	579.00	24	*16/18.375	18	35 lbs.
PPHC301618	650.00	30	*16/18.375	18	40 lbs.
PPHC361618	706.00	36	*16/18.375	18	45 lbs.

Please Specify Left or Right by Denoting “L” or “R” at the end of the item number

## Three Drawer Base Cabinet



Wall Case made with TFL (Thermally Fused Laminate)

Seamless Cabinet Doors are RTF (Rigid Thermofoil)

Three 6” Drawers

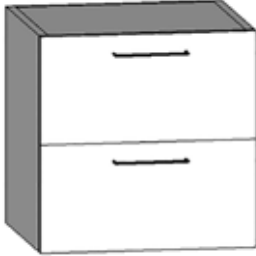
Standard Pulls-”T” Style Handle

Single Lock or Gang Lock Available

\*Depth Shown with and without Core Wall Added

<u>Item</u>	<u>List</u>	<u>Width</u>	<u>Depth</u>	<u>Height</u>	<u>Cabinet Weight</u>
PPDF181618A	738.00	18	*16/18.375	18	35 lbs.
PPDF241618A	809.00	24	*16/18.375	18	40 lbs.
PPDF301618A	878.00	30	*16/18.375	18	45 lbs.

## Two Drawer Base Cabinet



Wall Case made with TFL (Thermally Fused Laminate)

Seamless Cabinet Doors are RTF (Rigid Thermofoil)

Two 9" Drawers

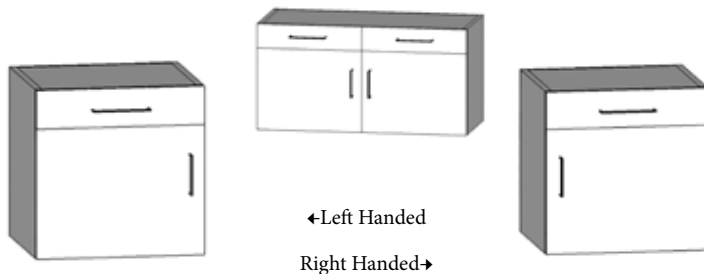
Standard Pulls-"T" Style Handle

Single Lock or Gang Lock Available

\*Depth Shown with and without Core Wall Added

<u>Item</u>	<u>List</u>	<u>Width</u>	<u>Depth</u>	<u>Height</u>	<u>Cabinet Weight</u>
PPDF181618B	716.00	18	*16/18.375	18	33 lbs.
PPDF241618B	791.00	24	*16/18.375	18	38 lbs.
PPDF301618B	869.00	30	*16/18.375	18	43 lbs.

## Drawer/Door Base Cabinets



Wall Case made with TFL (Thermally Fused Laminate)

Seamless Cabinet Doors are RTF (Rigid Thermofoil)

One Adjustable Shelf

Blum Hingees

Standard Pulls-"T" Style Handle

Single 6" Drawer

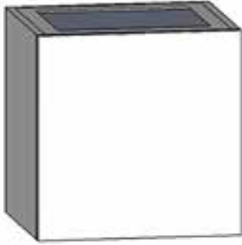
Single Lock or Double Lock Available

\*Depth Shown with and without Core Wall Added

<u>Item</u>	<u>List</u>	<u>Width</u>	<u>Depth</u>	<u>Height</u>	<u>Cabinet Weight</u>
PPDB181618	648.00	18	*16/18.375	18	30 lbs.
PPDB241618	713.00	24	*16/18.375	18	35 lbs.
PPDB301618	791.00	30	*16/18.375	18	40 lbs.
PPDB361618	857.00	36	*16/18.375	18	45 lbs.

Please Specify Left or Right by Denoting "L" or "R" at the end of the item number

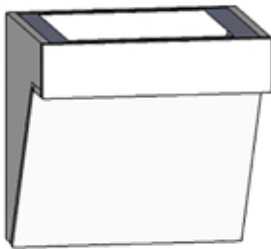
## Sink Base Cabinets



Sink Base made with TFL (Thermally Fused Laminate)  
 Removable Seamless Front Panel with RTF (Rigid Thermofoil)  
 \*Depth Shown with and without Core Wall Added

<u>Item</u>	<u>List</u>	<u>Width</u>	<u>Depth</u>	<u>Height</u>	<u>Cabinet Weight</u>
PPSC181618	525.00	18	*16/18.375	18	30 lbs.
PPSC241618	575.00	24	*16/18.375	18	35 lbs.
PPSC301618	641.00	30	*16/18.375	18	40 lbs.
PPSC361618	678.00	36	*16/18.375	18	45 lbs.

## Knee Clearance/ADA Sink Base Cabinets



Sink Base made with TFL (Thermally Fused Laminate)  
 Removable Seamless Front Panel RTF (Rigid Thermofoil)  
 Will Require ADA Sink Drain and Trap (Not Provided)  
 Please Confirm all ADA Compliances to your Local Code  
 \*Depth Shown with and without Core Wall Added

<u>Item</u>	<u>List</u>	<u>Width</u>	<u>Depth</u>	<u>Height</u>	<u>Cabinet Weight</u>
PPSC181618KNC	603.00	18	*16/18.375	18	50 lbs.
PPSC241618KNC	656.00	24	*16/18.375	18	55 lbs.
PPSC301618KNC	709.00	30	*16/18.375	18	60 lbs.
PPSC361618ADA	793.00	36	*16/18.375	18	65 lbs.

## Sink Base Cabinets with Door Access



Wall Case made with TFL (Thermally Fused Laminate)

Seamless Cabinet Doors are RTF (Rigid Thermofoil)

One Adjustable Shelf

Blum Hinges

Standard Pulls-"T" Style Handle

Single 6" Drawer

Single Lock or Double Lock Available

\*Depth Shown with and without Core Wall Added

<u>Item</u>	<u>List</u>	<u>Width</u>	<u>Depth</u>	<u>Height</u>	<u>Cabinet Weight</u>
PPSCD181618	532.00	18	*16/18.375	18	30 lbs.
PPSCD241618	579.00	24	*16/18.375	18	35 lbs.
PPSCD301618	650.00	30	*16/18.375	18	40 lbs.
PPSCD361618	706.00	36	*16/18.375	18	45 lbs.

Please Specify Left or Right by Denoting "L" or "R" at the end of the item number

## Faucet Options



GNF-Goose Neck Faucet



HSF-Hand Sensor Faucet

<u>Item</u>	<u>List</u>
GNF	231.00
HSF	1397.00

## Solid Surface Cut-Outs

<u>Item</u>	<u>List</u>
2-CO (2")	54.00
4-CO (4")	54.00
6-TRCO (6")	54.00

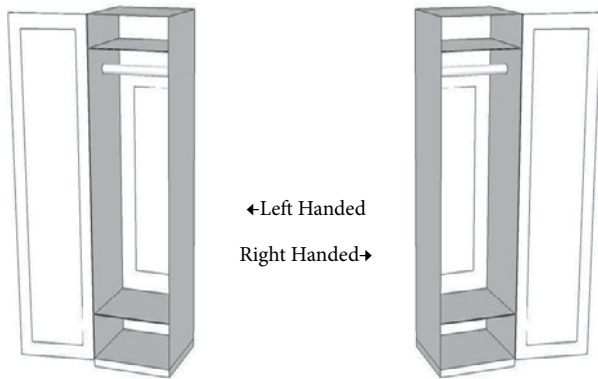
No Grommets Required for Solid Surface

## Seamless Wall Back Panels

<u>Item</u>	<u>List</u>	<u>Width</u>	<u>Depth</u>	<u>Height</u>	<u>Panel Weight</u>
PPBP1918	241.00	18	.50	18.75	9 lbs.
PPBP1924	285.00	24	.50	18.75	12 lbs.
PPBP1927	303.00	27	.50	18.75	13 lbs.
PPBP1930	325.00	30	.50	18.75	14 lbs.
PPBP1936	375.00	36	.50	18.75	17 lbs.

Height of Back Panels May Need to be Adjustd to Accomodate Work Surface Thickness

## Wardrobe Cabinet

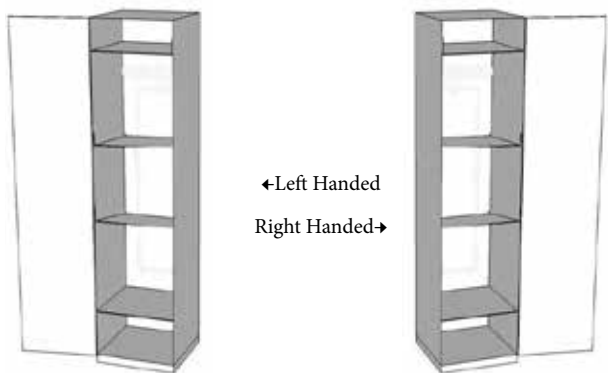


Wall Case made with TFL (Thermally Fused Laminate)  
 Seamless Cabinet Doors are RTF (Rigid Thermofoil)  
 Two Shelves  
 Blum Hinges  
 Standard Pulls-"T" Style Handle  
 Coat Hanger Hooks  
 Mirror 48" x 16"  
 Soft Closing Modesty Panel (11" Panel Extension)  
 Single Lock/Combination or Digital Locks  
 \*Depth Shown with and without Core Wall Added

<u>Item</u>	<u>List</u>	<u>Width</u>	<u>Depth</u>	<u>Height</u>	<u>Cabinet Weight</u>
PPWDC181660	1428.00	18	*16/18.375	60	130 lbs.

Please Specify Left or Right by Denoting "L" or "R" at the end of the item number

## Storage Cabinet



Wall Case made with TFL (Thermally Fused Laminate)  
 Seamless Cabinet Doors are RTF (Rigid Thermofoil)  
 Two Fixed Shelves/2 Adjustable Shelves  
 Blum Hinges  
 Standard Pulls-"T" Style Handle  
 Single Lock/Combination or Digital Locks  
 \*Depth Shown with and without Core Wall Added

<u>Item</u>	<u>List</u>	<u>Width</u>	<u>Depth</u>	<u>Height</u>	<u>Cabinet Weight</u>
PPTSC181660	1094.00	18	*16/18.375	60	135 lbs.

Please Specify Left or Right by Denoting "L" or "R" at the end of the item number

## Wall Mount Lap Top Station



Wall Case made with TFL (Thermally Fused Laminate)

Seamless Cabinet Doors are RTF (Rigid Thermofoil)

Single Lock Available

Available with Internal Locking Pharmaceutical Insert (LPC)

<u>Item</u>	<u>List</u>	<u>Width</u>	<u>Depth</u>	<u>Height</u>	<u>Cabinet Weight</u>
PWMLTS	913.00	20	3	20	50 lbs.
PWMLTS-LPC	985.00	20	3	20	55 lbs.

## LG HiMac Solid Surface Top with Integrated Back Splash

### Level 1 Solid Surface

<u>Item</u>	<u>List</u>	<u>Width</u>	<u>Depth</u>	<u>Height</u>	<u>Panel Weight</u>
PPWSSSIBS24	596.00	24	16.50	1.5	20 lbs.
PPWSSSIBS30	745.00	30	16.50	1.5	25 lbs.
PPWSSSIBS36	894.00	36	16.50	1.5	30 lbs.
PPWSSSIBS42	1043.00	42	16.50	1.5	35 lbs.
PPWSSSIBS48	1192.00	48	16.50	1.5	40 lbs.
PPWSSSIBS54	1341.00	54	16.50	1.5	45 lbs.
PPWSSSIBS60	1489.00	60	16.50	1.5	50 lbs.
PPWSSSIBS66	1638.00	66	16.50	1.5	55 lbs.
PPWSSSIBS72	1787.00	72	16.50	1.5	60 lbs.

Solid Surface Side Splash-Item # SS16SS-\$80.00 each

Solid Surface Integrated Sink-Item # SSIS1311-\$1072

\*\*\*Height of Back Panels May Need to be Adjustd to Accommodate Work Surface Thickness\*\*\*

## Lock Options

<u>Item</u>	<u>List</u>
SL-Single Lock	70.00
DL-Double Lock	82.00
GL-Gang Lock	402.00
CL-Combination Lock	142.00
Digital and Wireless Locks Available	

## Intensa Casework RTF and TFL Finishes



White



Almond



Tenino Oak



Maple



Nina Maple



Folkstone Gray



Pinta Maple



Clark Cherry



Drake



Brazilian Walnut



Wild Cherry



Mahogany



Tenino Gray

These Colors are Digital Reproductions and May Vary

## Intensa Casework Solid Surface Level 1

Nordic White

Opal White

Artic White

Alpine White

Ivory White

Solid Surface Integrated Sink-White Only

Level 2 and Level 3

## Intensa Casework Solid Surface Integrated Sink

Solid Surface Integrated Sink-White Only

Standard Size-13”L x 11” W x 9”D

Faucet Not Included with Sink

Intensa, Inc.  
PO Box 5981  
High Point, NC 27262  
P-888-636-2660 F-336-884-4007  
[www.intensa.net](http://www.intensa.net)